

---

# CRTM OF PACIFIC LLC - Plumbing Division

---

## TECHNICAL DATA

---

### DIE CASTING PYRAMIDAL STRAINER

#### DESCRIPTION

---

Die Casting aluminum pyramidal strainer made for flat roof drains. The dome strainer is compatible with the almost all copper or aluminum drain clamping ring. More over, the pyramidal strainer can be adapted to any type of drain with the gripping rubber coated legs that are tightly adjusted into the copper or aluminum drain sleeve or into the mechanical drain body.

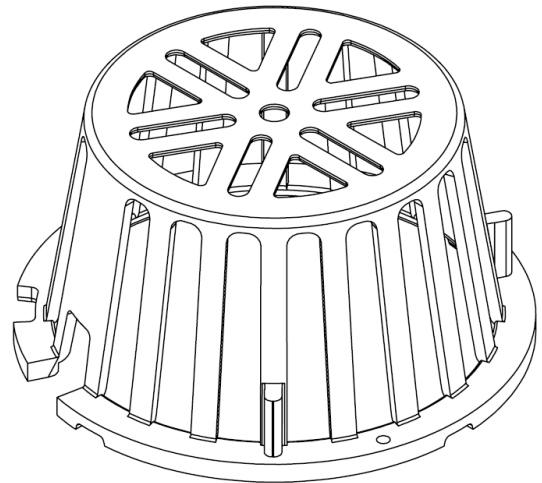
The pyramidal strainer is made from an aluminum alloy melted over 700° C (1300° F) temperature to be casted by pressure in a steel permanent mould, and removed from the mould once cooled down. This type of mould generates more resistant pieces, with generally, 30% to 40% superior mechanical characteristics in opposition with other types of moulds. The dome strainer is manufactured as per **CRTM of Pacific Llc.** specification, by a specialized, recognized and certified ISO 9001 company.

The **pyramidal strainer** includes a wider base-slot to prevent a complete clogging by accumulated debris.

#### TECHNICAL DESCRIPTION OF FINISHED PRODUCT

---

|                        |  |
|------------------------|--|
| Color                  | Aluminum (metallic gray)                             |
| Dome                   | Cast aluminum alloy                                  |
| Alloy                  | AISI10   |
| Legs                   | Extruded aluminum 6063 T5 solid. Rounded end         |
| Stainless Steel Screws | 2 screws of ¼" - 20 x 3"<br>2 screws of ¼" - 20 x ¾" |



**DIE CASTING PYRAMIDAL STRAINER**

| Dimensions               |                      |                        |
|--------------------------|----------------------|------------------------|
| Height                   | 3¾"                  | 98 mm                  |
| Maximum diameter         | 7½"                  | 190 mm                 |
| Standard orifice opening | 1,92 po <sup>2</sup> | 1238,5 mm <sup>2</sup> |
| Total vertical opening   | 37.2 po <sup>2</sup> | 24000 mm <sup>2</sup>  |
| Legs height              | 6¾"                  | 170 mm                 |
| Total weight of assembly | 12. 17 oz            | 350 g                  |

---

# CRTM OF PACIFIC LLC - Plumbing Division

---

## TECHNICAL DATA

---

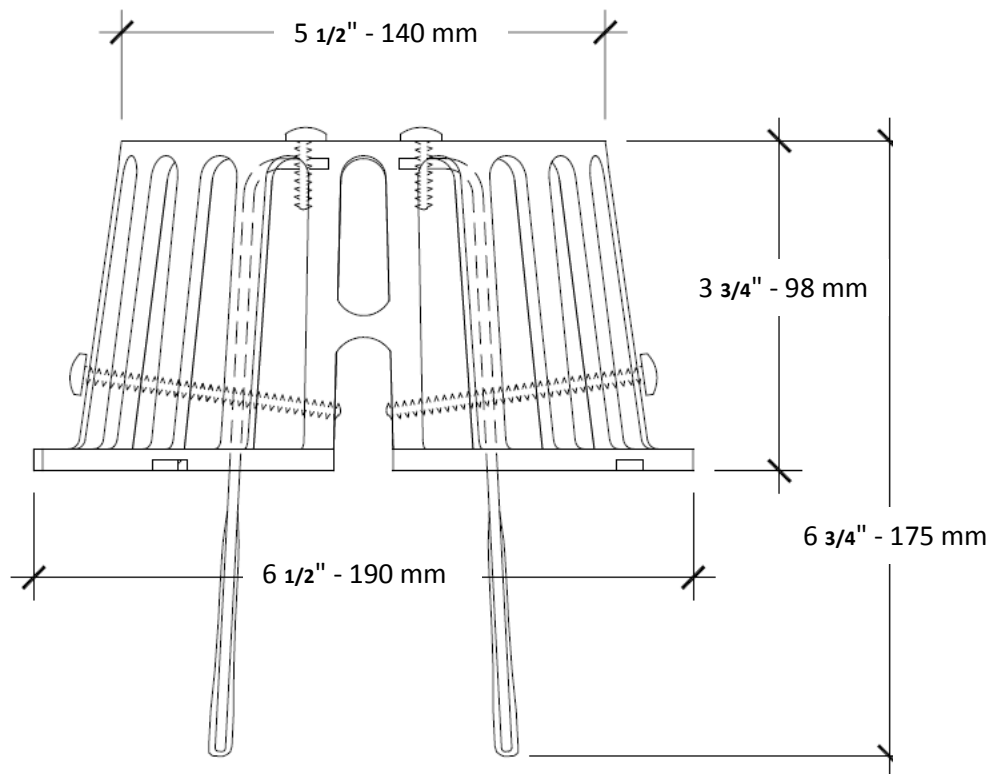
### DIE CASTING PYRAMIDAL STRAINER

#### INSTALLATION

---

##### Generality:

The **pyramidal strainer** is installed on any existing or new roof drain of 25 mm to 43 mm (1" to 5 5/8") diameter. The pyramidal strainer is tightly caught in place by the rubber coated adjustable legs. The two legs are tightened in final position with the stainless steel screws on the drain body. The rubber coating ties up the legs to the internal metal surface of the drain and prevents any potential chemical reaction between the two different metal surfaces.



#### USUALLY SUPPLIED

---

When you buy the **Die Casting aluminum pyramidal strainer**, you get:

- 1 Die cast aluminum alloy pyramidal strainer
- 2 Rubber coated aluminum legs
- 2 Stainless steel screws of 75 mm (3") and 2 screws of 19 mm (3/4")

---

# CRTM OF PACIFIC LLC - Plumbing Division

---

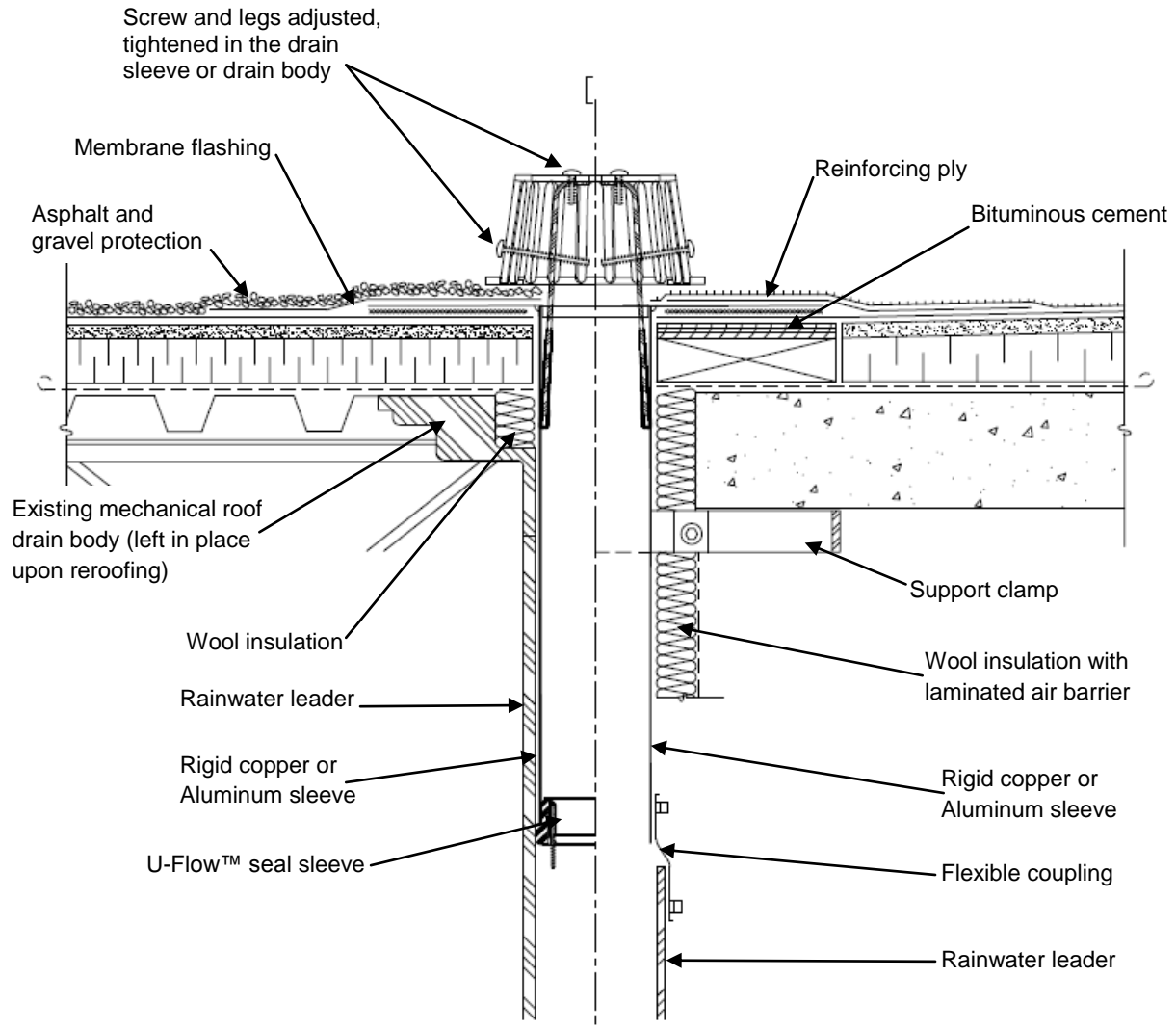
## TECHNICAL DATA

---

### DIE CASTING PYRAMIDAL STRAINER

#### TYPICAL ASSEMBLING

---



**Note:** Die Casting aluminum pyramidal strainer with adjustable legs system, can be used at any of two systems: Asphalt felt membrane or Modified bitumen membrane, as shown in the above drawing.

#### NOTICE

---

The information and specification provided in this document are applicable at time of publication. They are condensed from the exact results obtained through real tests and field experience, but may not be construed as implying any absolute and final dictate on our part. CRTM of Pacific Llc. Reserves the right to modify, without notice, the information provided in the present document, as a result of its research and development policy on its products.

---

# CRTM OF PACIFIC LLC - Plumbing Division

---

TECHNICAL DATA

---

## DIE CASTING PYRAMIDAL STRAINER

DESIGNED AND MANUFACTURED BY CRTM OF PACIFIC LLC.

---

Technical assistance or further information may be obtained from:



Pembroke Pines, Florida, 33025

Email: [carloserios@crtmdelpacifico.org.co](mailto:carloserios@crtmdelpacifico.org.co)

Web: [www.crtmdelpacifico.org.co](http://www.crtmdelpacifico.org.co)

Telephone USA: +1 786 440 3393

Telephone Colombia: +57 315 577 6637

DISTRIBUTED BY:

---